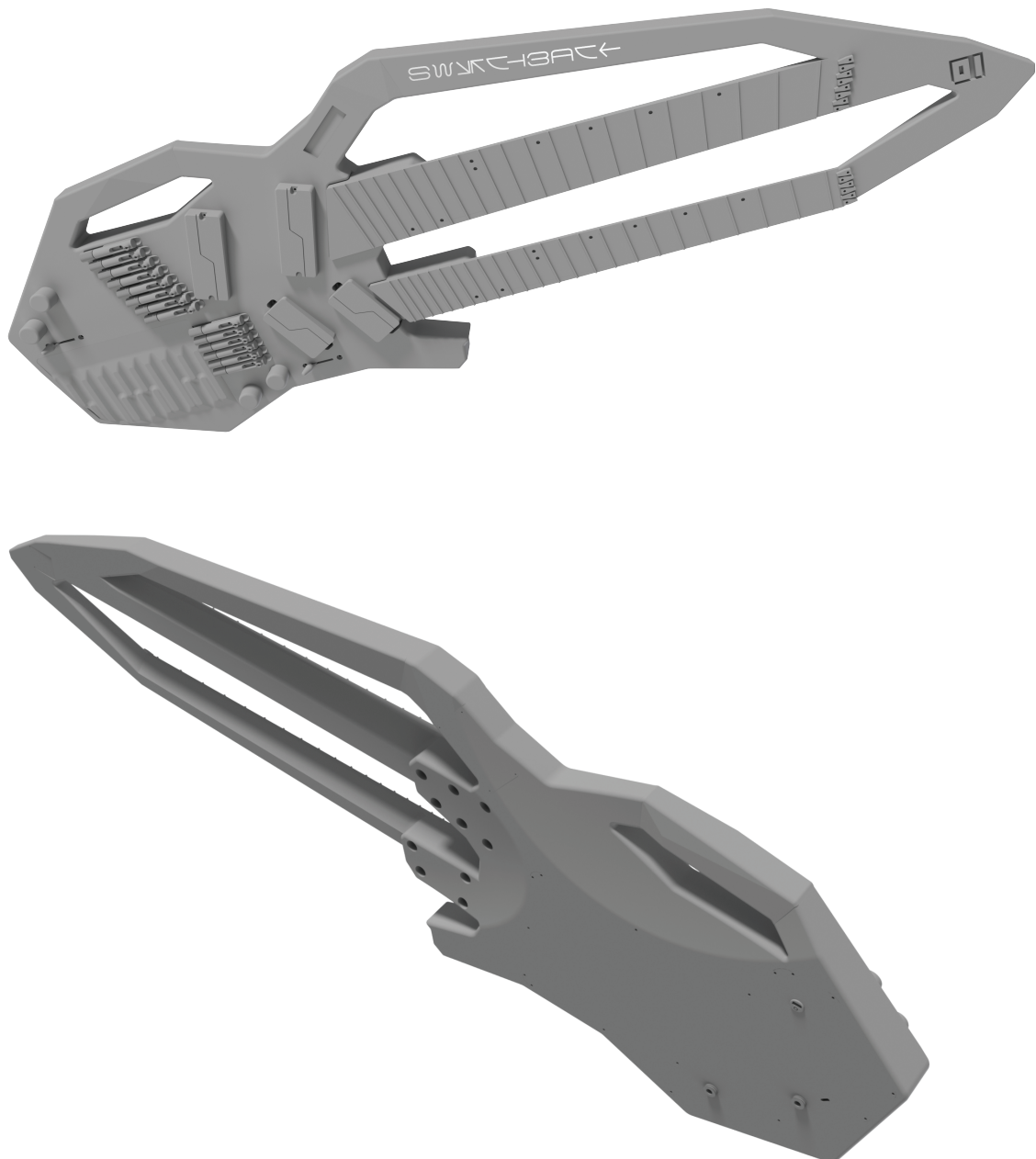
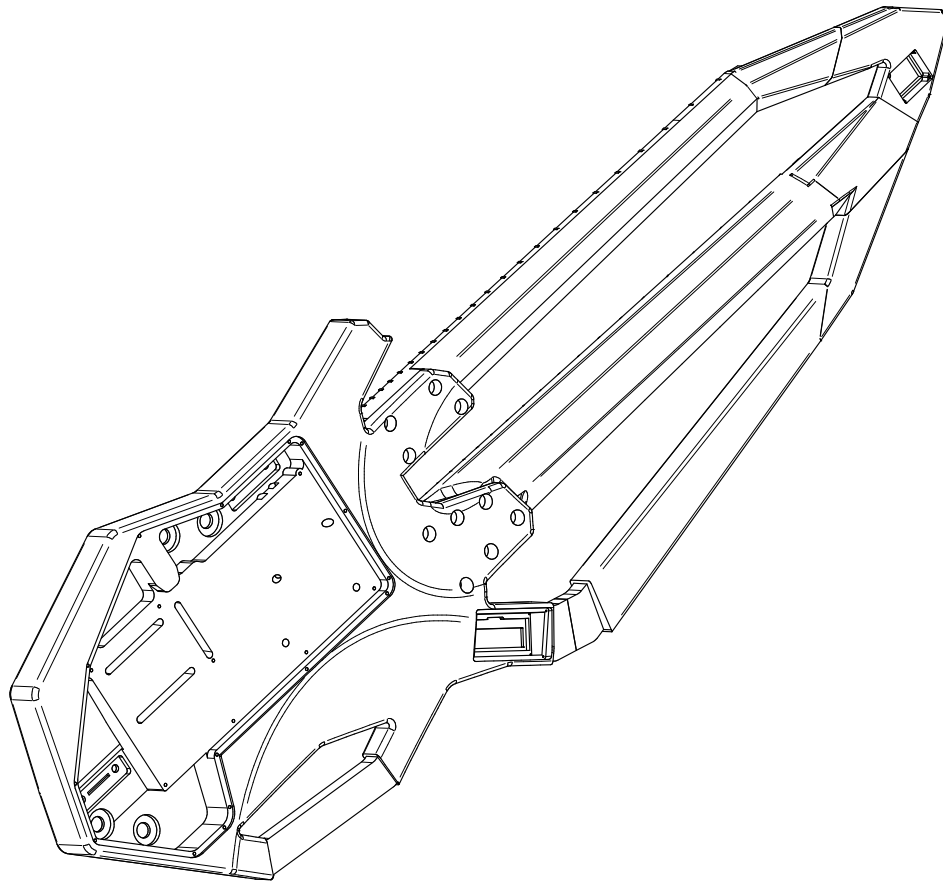
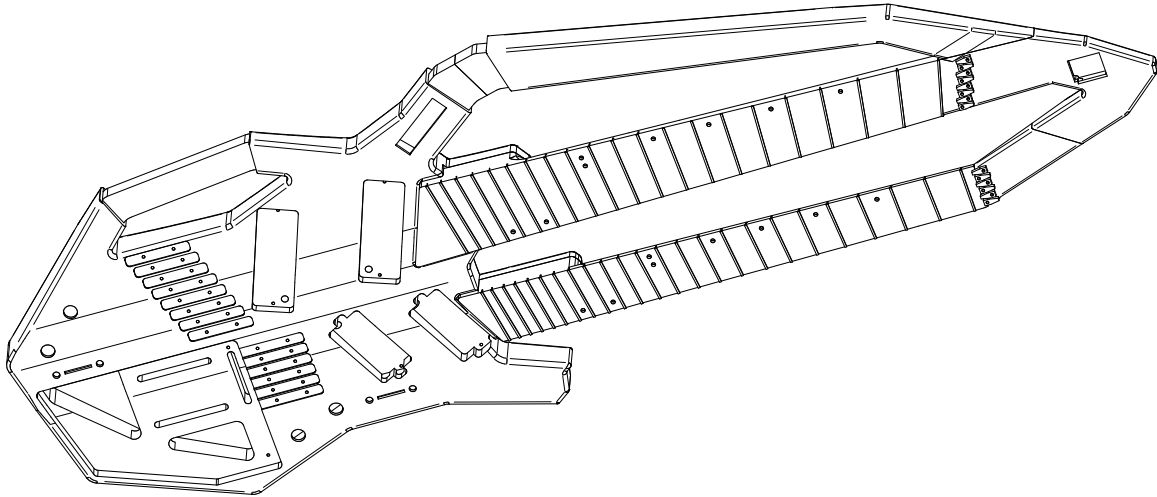


SWITCHBACK

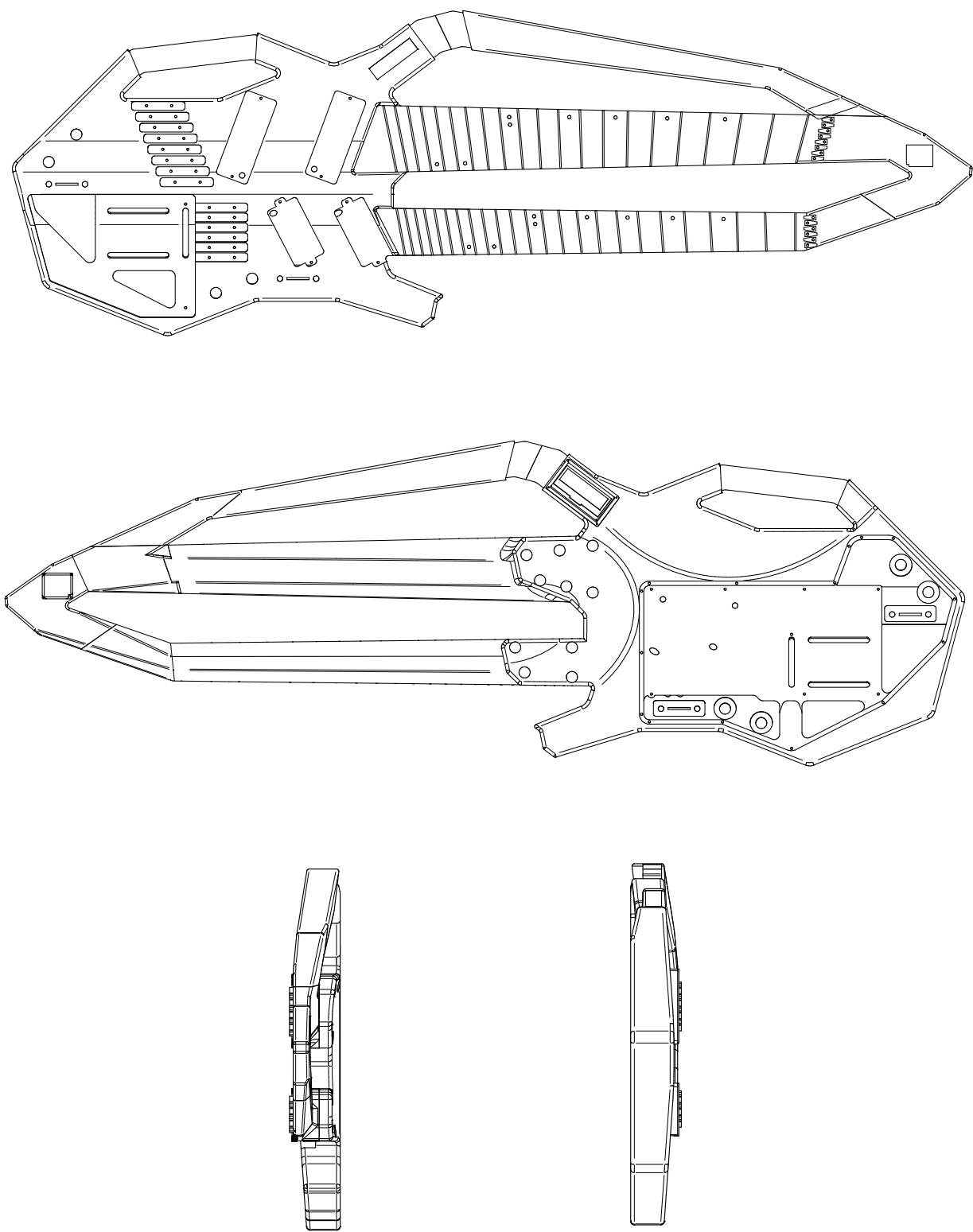
Double neck, headless, multiscale guitar with compartments and indentations for additional components installed after the build.



ISOMETRIC VIEWS



BASE VIEWS



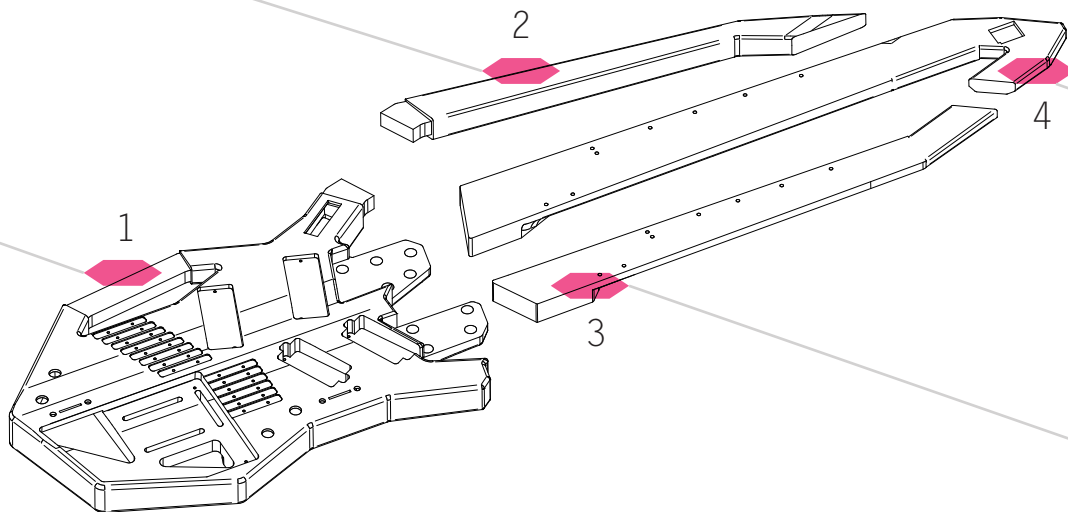
ASSEMBLY

1

Body, chambered maple/basswood to reduce weight and avoid warping

2

Horn, extended from top of body to headless tail, chambered to reduce weight



3

6-String Neck, modeled after Boden Metal 6, to be replaced with luthier-specific neck

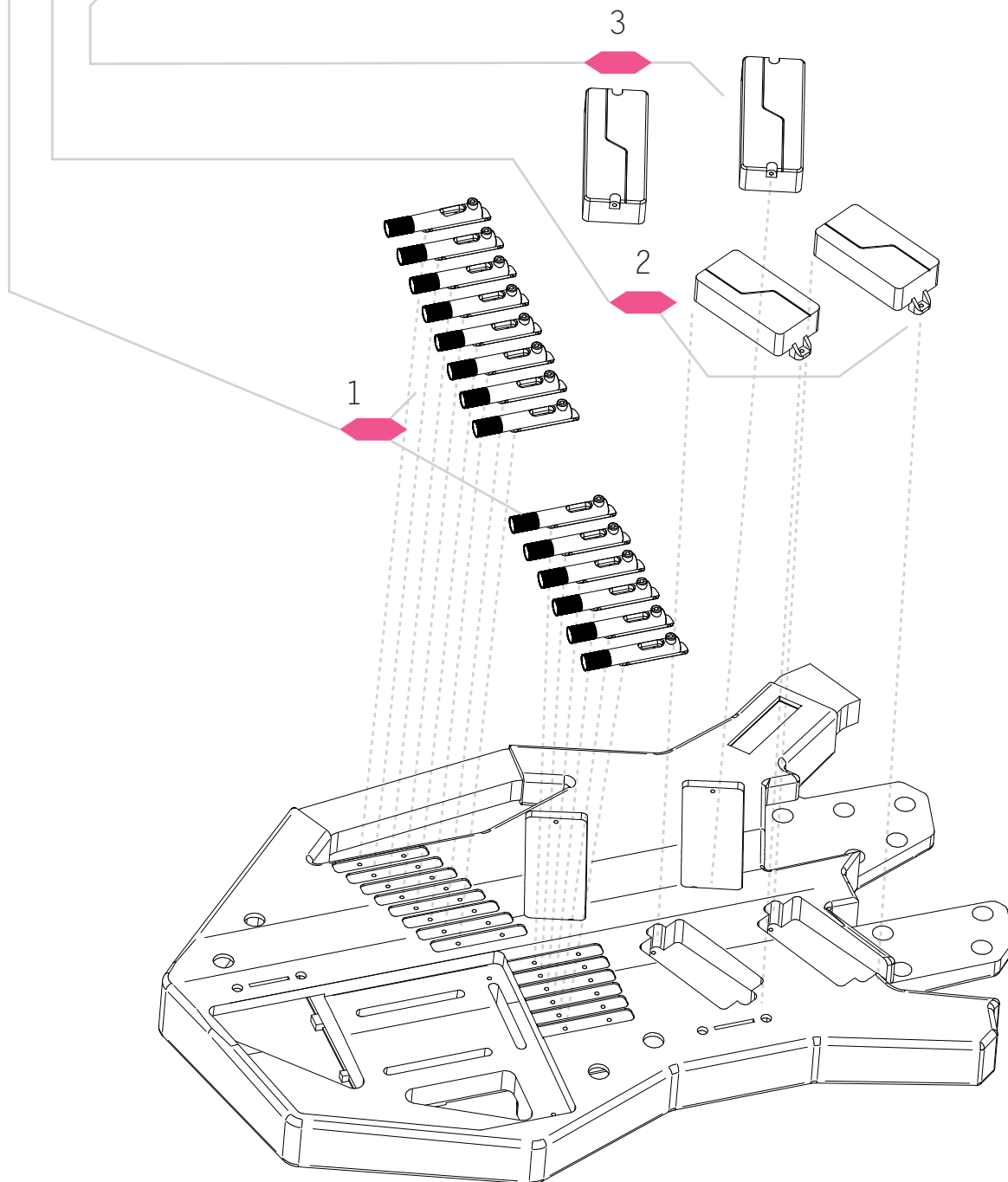
4

8-String Neck, modeled after Boden Metal 8, to be replaced with luthier-specific neck

Fret marker LEDs installed in both necks.

TUNERS & PICKUPS

- 1 Headless tuners (Strandberg tuners pictured)
- 2 6-String Pickups: Fishman Fluence Modern 6
- 3 8-String Pickups: Fishman Fluence Modern 8



ELECTRONICS

- 1 White potentiometers for Fishman Fluence
- 2 White switches for Fishman Fluence
- 3 TRS 1/4" Audio Jacks
- 4 Fishman Rechargeable Battery
- 5 Plastic cover installed after the build

